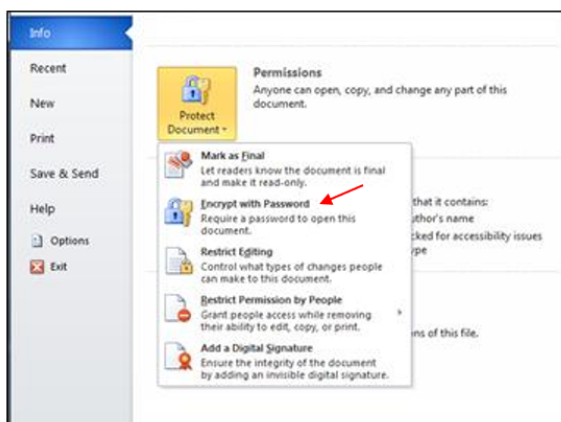


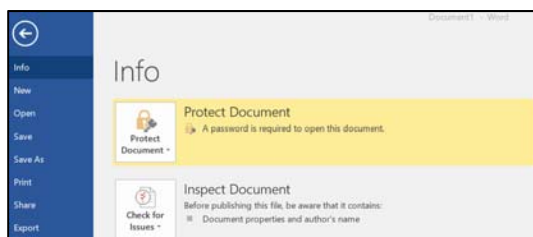
## Creating a Password Protected Word/Excel/Powerpoint Document

Microsoft Office allows for password protection of Microsoft Word, Excel and PowerPoint documents. Below are instructions for password protecting a Microsoft Word document but the steps are the same for Excel and PowerPoint.

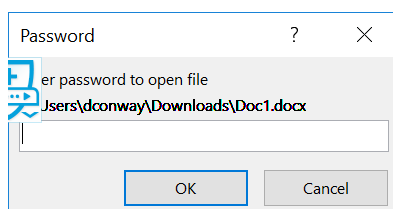
1. Open the Microsoft Word document you wish to password protect. Then click **File > Info > Protect Document**.
2. Select "Encrypt with password" from the list.



3. Enter the password you wish to use. Once password has been applied the protected document setting will highlight. Click the back arrow to return to your document. You can then save your document as normal.



4. The next time you open this document you will be prompted for the password created.



CEIST Education Office

Summit House, Embassy Office Park, Kill, Co. Kildare, W91 VK0T. Phone +353 (0)1 6510350 [www.ceist.ie](http://www.ceist.ie), [info@ceist.ie](mailto:info@ceist.ie)  
Bernard Keeley, Chairperson, Canon Brendan Kilcoyne, Gene O'Sullivan, John O'Donovan, Anne McDonagh, Mary Rossiter, PBVM,  
Freda Nolan, Donal Cronin, David Cox, Anne McDonnell. Maria O'Rourke, Margaret Farrell, RSM. Dr. Marie Griffin, CEO

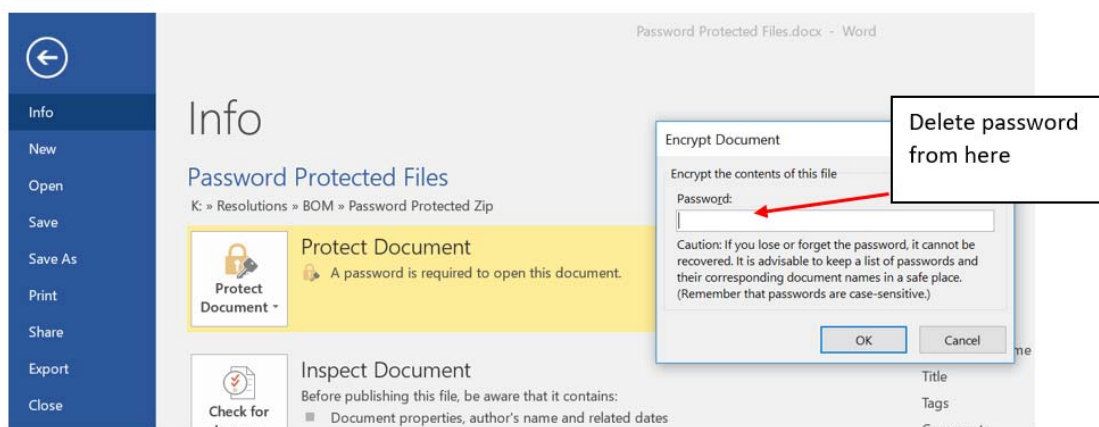
## Removing the Password

If at any stage, you would like to remove the password you have just set simply click

**File > Protect Document > Encrypt with Password**

Delete the password and click OK.

Be sure to save your file to make that change permanent.



CEIST Education Office

Summit House, Embassy Office Park, Kill, Co. Kildare, W91 VK0T. Phone +353 (0)1 6510350 [www.ceist.ie](http://www.ceist.ie), [info@ceist.ie](mailto:info@ceist.ie)  
Bernard Keeley, Chairperson, Canon Brendan Kilcoyne, Gene O'Sullivan, John O'Donovan, Anne McDonagh, Mary Rossiter, PBVM,  
Freda Nolan, Donal Cronin, David Cox, Anne McDonnell. Maria O'Rourke, Margaret Farrell, RSM. Dr. Marie Griffin, CEO